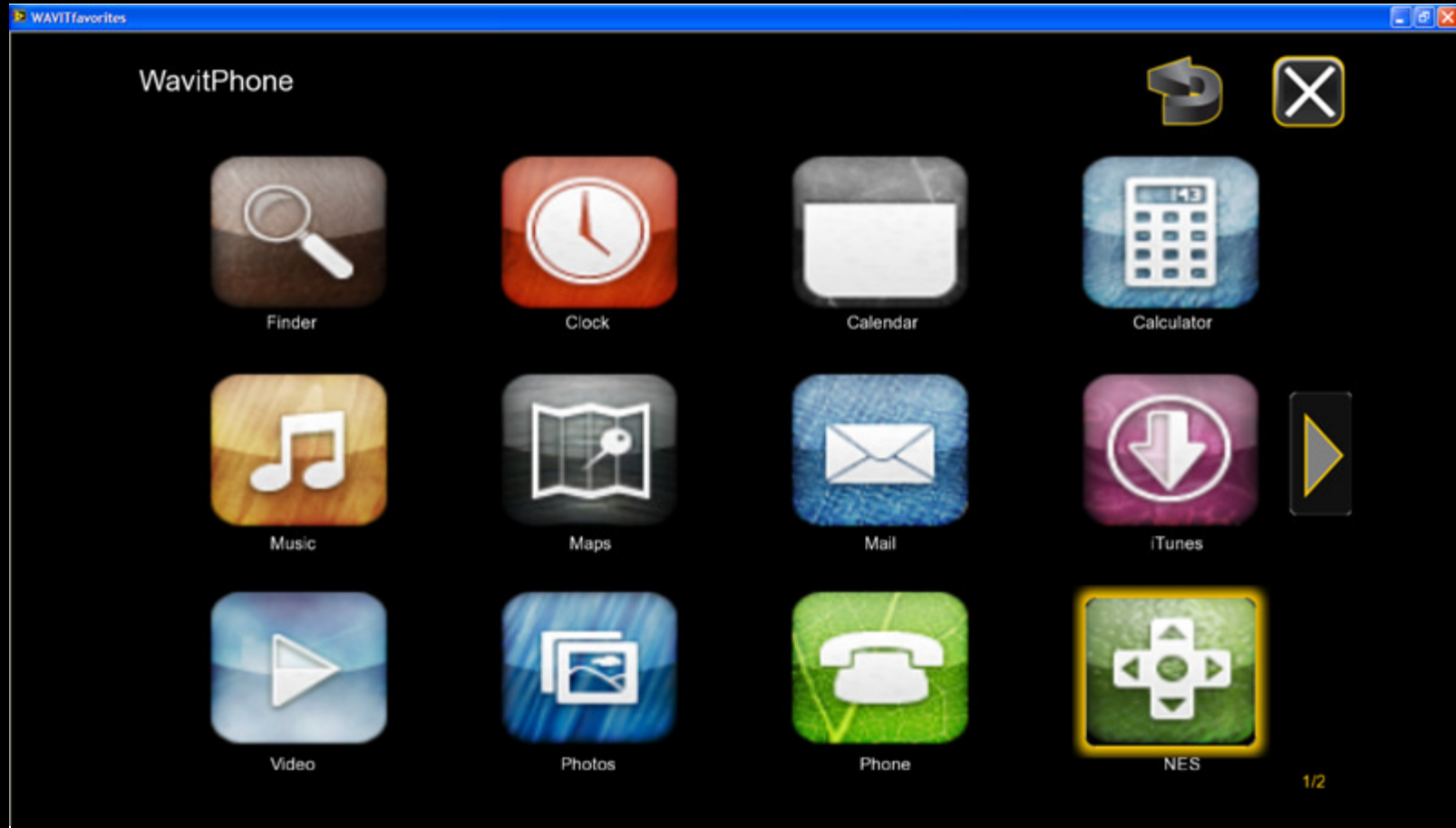


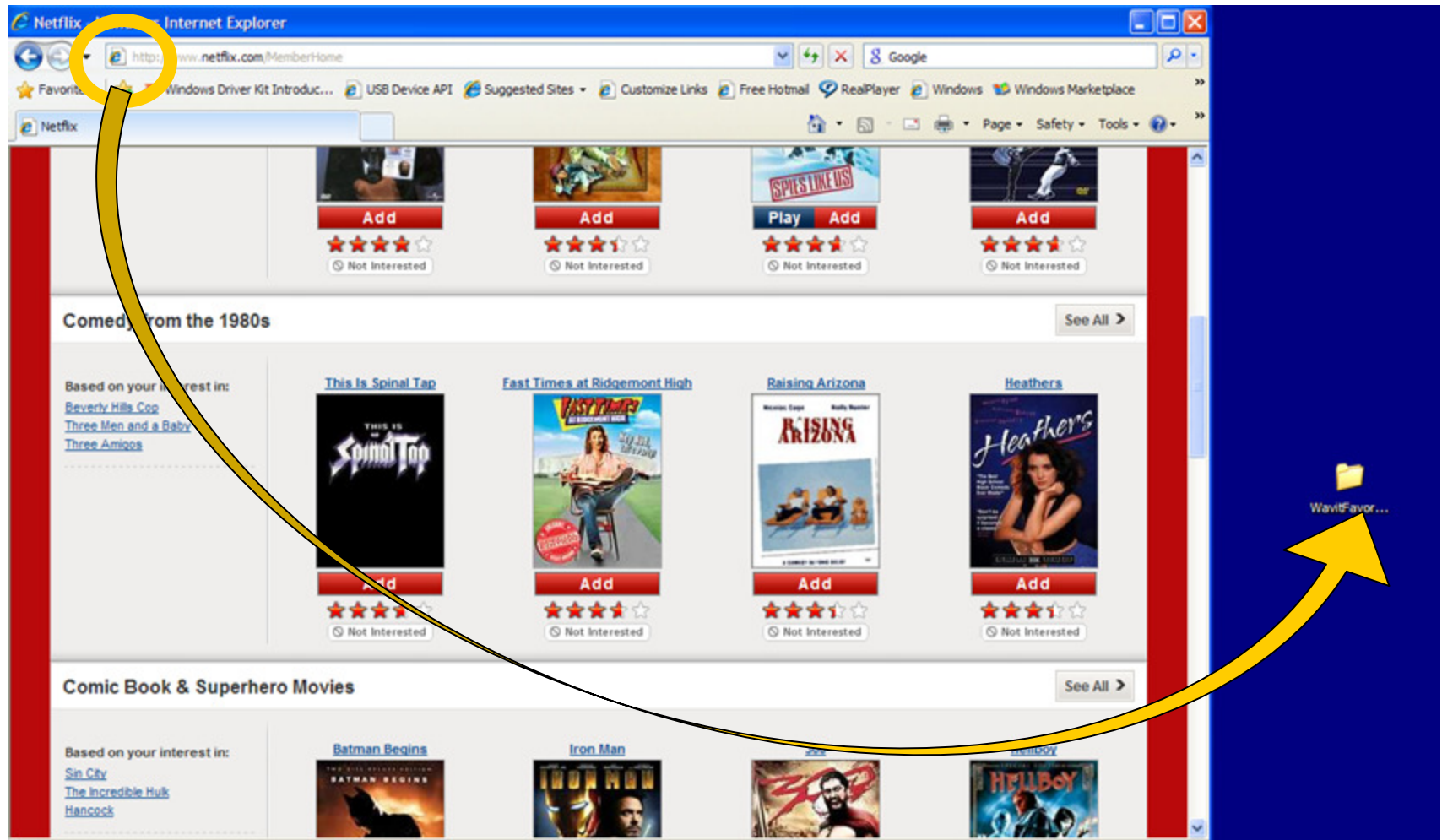
# How to create your own TV Touch Interface



## How to create a Web-link in WavitFavorites

Step 1. Browse to your target website

Step 2. Drag the icon to the left of the http:// address into the WavitFavorites folder on the desktop.

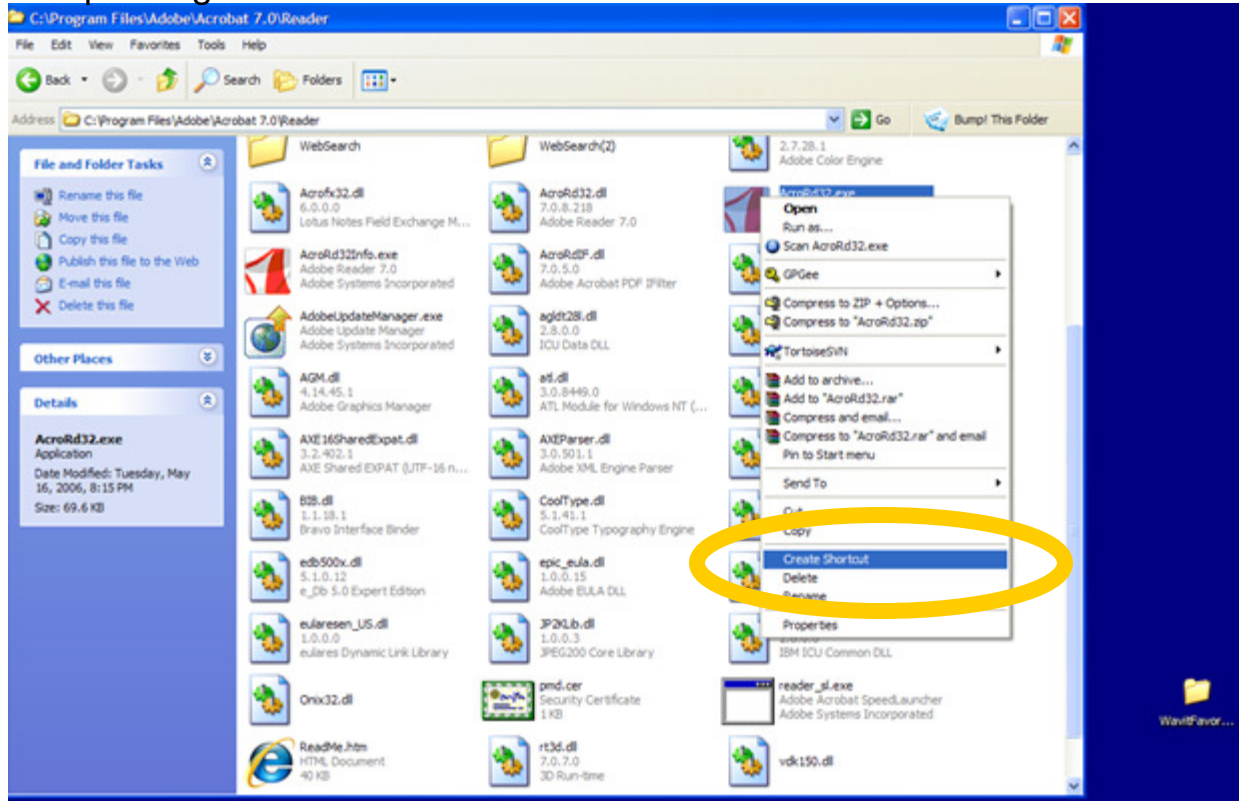


Step 3. (Optional) You can also create Folders inside WavitFavorites, such as “MyChannels”.

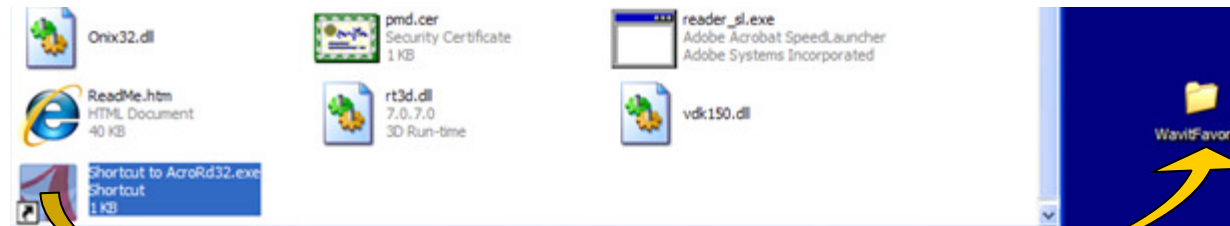
# How to create an Application Link in WavitFavorites

Step 1. Find your target application (for example located under Program Files)

Step 2. Right-Click to “Create Shortcut”

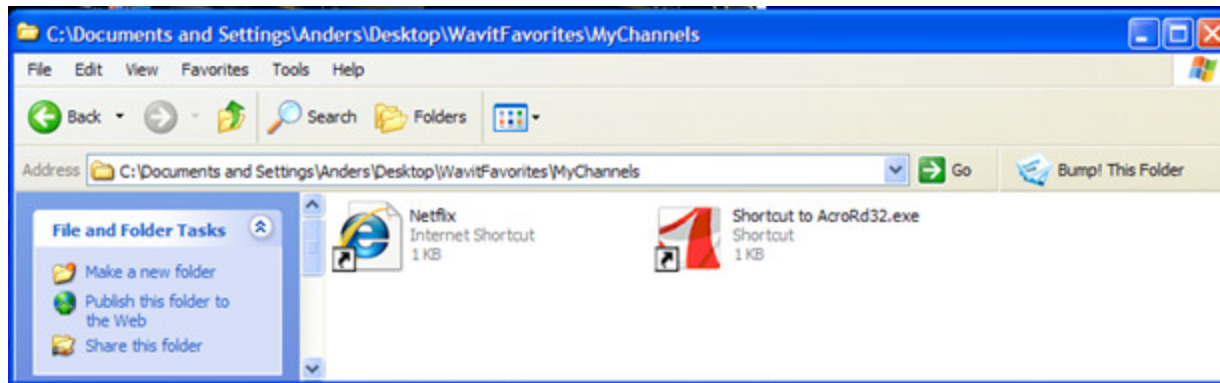


Step 3. Drag the shortcut into the WavitFavorites folder on the desktop.

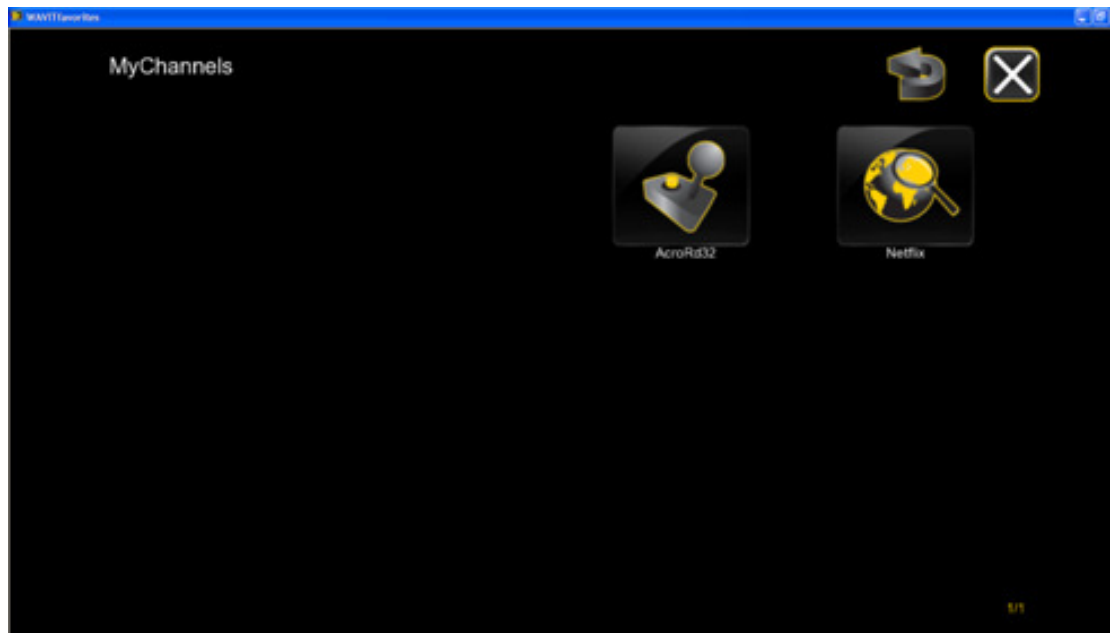


And you are done!

If you look at your WavitFavorites folder it looks like this (Example: in your newly created folder “MyChannels”)

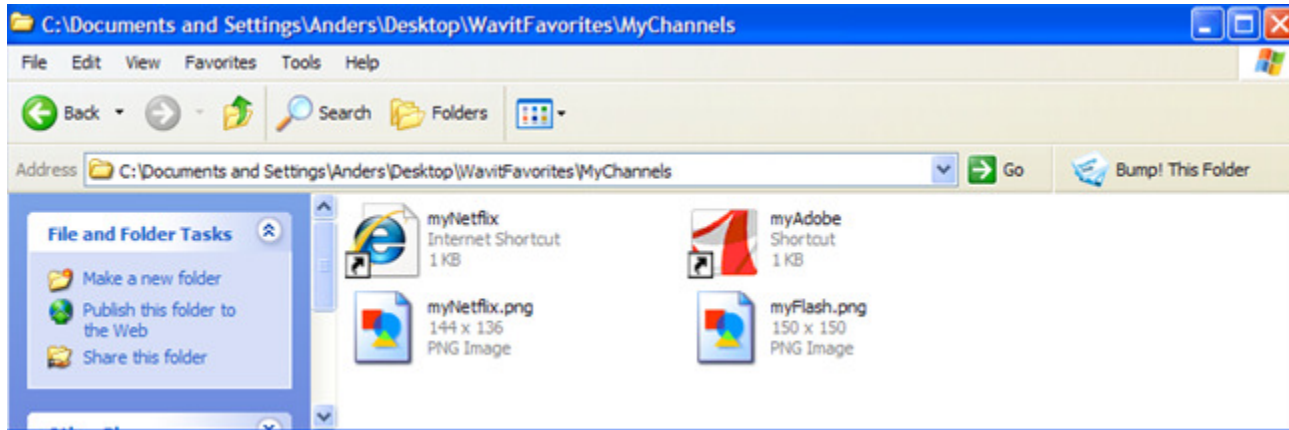


Next time you run WavitMENU you will see YOUR channels



## Pretty it up! Change names and icons

1. Rename the links and create some picture files (.png) with the same names in the same folder.



Next time you run WavitMENU you will see YOUR channels

